



Carhaulers & Equipment



- 5" CHANNEL BUGGY HAULER (B5)**
- ANGLE PIPE TOP (P8)**
- 5" CHANNEL CARHAULER (C5)**
- 6" CHANNEL CUSTOM CARHAULER (CC)**
- 8" CHANNEL CARHAULER (C8)**
- LIGHT DUTY DECKOVER 5" CHANNEL (L5)**
- MEDIUM DUTY DECKOVER 6" CHANNEL (L6)**



5" Channel Buggy Hauler (B5)



Lengths
18' & 20'

Standard Features

- 7,000 lb. G.V.W.R.
- 3,500 lb. x 2 G.A.W.R.
- 2" Ball Coupler
- Safety Chains
- 1 - Side Wind Drop-Leg Jack (8,000 lb.)
- 2 - Posi-lube Axles, Idler & Brake (3,500 lb.)
- 4 Leaf Double-eye Spring Suspension
- 4 - NEW 15" White Spoke Wheels
- 4 - NEW ST205/75R15 Rad.Tires (1,820 lb.)
- Electric Breakaway Kit w/ Charger
- 9" High Drive Over DP Steel Fenders
- 5' Channel Ramps w/ Holder
- 5" Channel Frame & Tongue
- 3" Channel Crossmembers 24" on Center
- 2" Treated Pine Lumber Deck
- 102" Wide Deck
- 10 Lashing Rings
- DOT Approved Flushmount Lights
- Sealed Wire Harness
- Sand Blasted, Acid Washed, Powder Coated



At PJ Trailers, every trailer we build is powder coated with Sherwin-Williams™ Powder Coat. A powder coat finish is far superior to conventional paint. It is extremely durable and does not easily crack, chip, or peel as conventional paint does. Powdercoating also helps prevent rust & corrosion making it the longest lasting and most durable finish on the market.

Coupler Options

- BP 2" A-Frame *
- BP 2 5/16" A-Frame
- BP 2" Adjustable
- BP 2 5/16" Adjustable
- 3" Pintle Eye - Channel-mount (14,000 lb.)

Axle Options

- (2) 3,500# One Electric / Spring *
- (2) 3,500# Electric / Spring
- (2) 5,200# One Electric / Spring
- (2) 5,200# Electric / Spring

Tail Options

- Straight Deck w/ 5' Slide-in Ramps *

Color Options

- Black Powdercoat *
- Equipment Yellow Powdercoat
- Grey Powdercoat
- Red Powdercoat
- Regatta Blue Powdercoat
- Tractor Green Powdercoat
- White Powdercoat

Other Options

- 2 Flush-mount D-Rings
- Steel Floor
- Spare Tire Mount
- 16"oc Crossmembers

* denotes a standard feature



Angle Pipetop (P8)



Lengths
16' - 20'

Standard Features

- 14,000 lb. G.V.W.R.
- 7,000 lb. x 2 G.A.W.R.
- 2 5/16" Ball Coupler
- Safety Chains
- 1 - Jack (7,000 lb.)
- 2 - Posi-lube Brake Axles (7,000 lb.)
- 6 Leaf Slipper Spring Suspension
- 4 - 16" White Spoke Wheels
- 4 - 235/80R16 Radial Tires (3,520 lb.)
- Electric Breakaway Kit w/ Charger
- 5' Channel Ramps w/ Holder
- 2x3 Angle Upright
- 2 7/8 Pipe Top Rail
- 5" Channel Tongue & 3" x 5" Angle • Frame
- 3" Channel Crossmembers 16" on Center
- 2" Treated Pine Lumber Deck
- Sealed Wire Harness
- Sand Blasted, Acid Washed, Powder Coated



At PJ Trailers, every trailer we build is powder coated with Sherwin-Williams™ Powder Coat. A powder coat finish is far superior to conventional paint. It is extremely durable and does not easily crack, chip, or peel as conventional paint does. Powdercoating also helps prevent rust & corrosion making it the longest lasting and most durable finish on the market.

Coupler Options

- BP 2 5/16" Adjustable (14,000 lb.) *
- Rigid mount 2-5/16 (25,000 lb.)
- GN 2 5/16" Round (30,000 lb.) w/ Toolbox
- GN Load-Leveling 2 5/16" Square (30,000 lb.) & Tbx
- 3" Pintle Eye - Channel-mount (21,000 lb.)
- GN 2 5/16" Square (30,000 lb.) w/ Toolbox
- GN 2 5/16" Round (25,000 lb.) w/ Toolbox
- GN 2 5/16" Square (25,000 lb.) w/ Toolbox

Axle Options

- (2) 5,200# Electric / Spring
- (2) 5,200# One Electric / Spring
- (2) 7,000# Electric / Drop
- (2) 7,000# Electric / Spring *
- (2) 7,000# Electric / Torsion
- (2) 7,000# One Electric / Spring
- (2) 7,000# Elec/Hyd Disk / Spring
- (2) 7,000# Oil Bath/Drum Brake / Spring
- (2) 7,000# Dexter Electric / Spring
- (2) 7,000# Dexter Electric / Torsion
- (2) 7,000# Load Range G 14ply Tires Electric / Spring
- (2) 7,000# Load Range G 14ply Tires Electric / Torsion
- (2) 7,000# Load Range G 14ply Tires Hydraulic Drum / Spring
- (2) 7,000# Load Range G 14ply Tires Elec/Hyd Disk / Spring
- (2) 8,000# Oil Bath Axles w / 235-80 Tires Electric / Spring
- (2) 8,000# Load Range G Tires Electric / Spring
- (2) 8,000# Load Range G Tires Electric / Torsion

Tail Options

- Straight deck w/ 5' Slide-in Ramps *

Color Options

- Black Powdercoat *
- Equipment Yellow Powdercoat
- Grey Powdercoat
- Red Powdercoat
- White Powdercoat

Other Options

- 1 Pair D-Rings
- LED Lights
- Spare Tire Mount
- Spare Tire and Mount

* denotes a standard feature



5" Channel Carhauler (C5)



Lengths
14' - 20'

Standard Features

- 7,000 lb. G.V.W.R.
- 3,500 lb. x 2 G.A.W.R.
- 2" Ball Coupler
- Safety Chains
- 1 - Pipe Mount Swivel Jack (5,000 lb.)
- 2 - Posi-lube Axles, Idler & Brake (3,500 lb.)
- 4 Leaf Double-eye Spring Suspension
- 4 - NEW 15" White Spoke Wheels
- 4 - NEW ST205/75R15 Rad.Tires (1,820 lb.)
- Stake Pockets
- Electric Breakaway Kit w/ Charger
- 9" x 72" Treadplate Removable Aluminum Fenders
- 5' Channel Ramps w/ Holder
- 5" Channel Frame & Tongue
- 3" Channel Crossmembers 24" on Center

- 2" Treated Pine Lumber Deck
- 83" Wide Deck
- DOT Approved Flushmount Lights
- Sealed Wire Harness
- Sand Blasted, Acid Washed, Powder Coated



At PJ Trailers, every trailer we build is powder coated with Sherwin-Williams™ Powder Coat. A powder coat finish is far superior to conventional paint. It is extremely durable and does not easily crack, chip, or peel as conventional paint does. Powdercoating also helps prevent rust & corrosion making it the longest lasting and most durable finish on the market.

Coupler Options

- BP 2" A-Frame *
- BP 2 5/16" A-Frame
- BP 2" Adjustable
- BP 2 5/16" Adjustable
- 3" Pintle Eye - Channel-mount (14,000 lb.)

Axle Options

- (2) 3,500# One Electric / Spring *
- (2) 3,500# Electric / Spring
- (2) 5,200# One Electric / Spring
- (2) 5,200# Electric / Spring

Tail Options

- Straight Deck w/ 5' Slide-in Ramps *
- 2' Dovetail w/ 5' Slide-in Ramps
- 4' Dovetail w/ 5' Slide-in Ramps
- 2' Dovetail w/ 2 Fold-up Ramps
- Straight Deck w/ 2 Fold-up Ramps
- 4' Dovetail w/ 2 Fold-up Ramps

Color Options

- Black Powdercoat *
- Equipment Yellow Powdercoat
- Grey Powdercoat
- Red Powdercoat
- Regatta Blue Powdercoat
- Tractor Green Powdercoat
- White Powdercoat

Other Options

- 9" Rear Bumper For Slide-in Ramps
- 2 Flush-mount D-Rings
- Diamond Plate Fenders
- Open Pit Steel Floor
- 2" Pipetop Removable Siderails
- Rubrail
- Steel Floor w/ 4 D-Rings
- Spare Tire Mount
- Rear Trailer Support Jacks
- 16"oc Crossmembers

* denotes a standard feature



6" Channel Custom Carhauler (CC)



Lengths
16' - 24'

Standard Features

- Front Toolbox (GN Only)
- 14,000 lb. G.V.W.R.
- 7,000 lb. x 2 G.A.W.R.
- 2 5/16" Ball Adjustable Coupler
- Safety Chains
- 1 - Drop Leg Jack (10,000 lb.)
- 2 - Posi-lube Brake Axles (7,000 lb.)
- 6 Leaf Slipper Spring Suspension
- 4 - 16" White Spoke Wheels
- 4 - 235/80R16 Radial Tires (3,520 lb.)
- Stake Pockets
- Electric Breakaway Kit w/ Charger
- 9" x 72" Treadplate Removable Steel
- Fenders**
- 5' Channel Ramps w/ Holder
- Rear Trailer Support Stands
- 6" Channel Frame & Tongue
- 3" Channel Crossmembers 16" on Center
- 2" Treated Pine Lumber Deck
- 83" Wide Deck (80" w/ Torsion or Drop Axles)
- DOT Approved Flushmount Lifetime LED Lights
- Sealed Wire Harness
- Sand Blasted, Acid Washed, Powder Coated



At PJ Trailers, every trailer we build is powder coated with Sherwin-Williams™ Powder Coat. A powder coat finish is far superior to conventional paint. It is extremely durable and does not easily crack, chip, or peel as conventional paint does. Powdercoating also helps prevent rust & corrosion making it the longest lasting and most durable finish on the market.

Coupler Options

- BP 2 5/16" Adjustable (14,000 lb.) *
- Rigid mount 2-5/16 (25,000 lb.)
- GN 2 5/16" Round (30,000 lb.) w/ Toolbox
- GN Load-Leveling 2 5/16" Square (30,000 lb.) & Tbx
- 3" Pintle Eye - Channel-mount (21,000 lb.)
- GN 2 5/16" Square (30,000 lb.) w/ Toolbox
- GN 2 5/16" Round (25,000 lb.) w/ Toolbox
- GN 2 5/16" Square (25,000 lb.) w/ Toolbox

Axle Options

- (2) 5,200# Electric / Spring
- (2) 5,200# Electric / Torsion
- (2) 5,200# Hydraulic Drum / Spring
- (2) 7,000# Electric / Drop
- (2) 7,000# Electric / Spring *
- (2) 7,000# Electric / Torsion
- (2) 7,000# Hydraulic Drum / Spring
- (2) 7,000# Elec/Hyd Disk / Spring
- (2) 7,000# Oil Bath/Drum Brake / Spring
- (3) 7,000# Electric / Spring
- (3) 7,000# Electric / Torsion
- (3) 7,000# Elec/Hyd Disk / Spring
- (2) 8,000# Oil Bath Axles w / 235-80 Tires Electric / Spring
- (2) 8,000# Load Range G Tires Electric / Spring
- (2) 8,000# Load Range G Tires Electric / Torsion
- (3) 8,000# Load Range G Tires Electric / Spring

Tail Options

- Straight deck w/ 5' Slide-in Ramps *
- 2' Dovetail w/ 5' Slide-in Ramps
- 2' Dovetail w/ 5' Fold-up Ramps
- Straight deck w/ 5' Fold-up Ramps
- 2' Dovetail w/ HD Fold-up Ramps
- 4' Dovetail w/ 5' Slide-in Ramps
- 4' Dovetail w/ 5' Fold-up Ramps
- 2' Dovetail w/ 3 5' Fold-up Ramps

Color Options

- Black Powdercoat *
- Equipment Yellow Powdercoat
- Grey Powdercoat
- Red Powdercoat
- White Powdercoat

Other Options

- Cold Weather Wiring Harness (7-Way RV)
- 2nd Jack (Bumper Pull)
- Plate for Winch
- 6" Taller GN Riser
- Douglas Fir Lumber
- 9,990 G.V.W.R.
- Rubrail
- 12"oc Crossmembers
- 1 Pair D-Rings
- Rough Oak Floor
- Drive Over Fenders
- Receiver Hitch
- 2 3/8" Removable Pipetop on Siderails
- Diamond Plate Running Boards
- Steel Floor & 4 D-Rings
- Front Toolbox (Bumper Pull)
- 102" Deck Width
- Mount Only for Spare Tire
- Spare Tire and Mount (Bumper Pull)
- Deck on the Neck (GN Only)
- Rear Trailer Support Jacks
- Winch 12VDC (12,000 lb.) Incl. Front Toolbox
- 2-speed Jacks (12,000 lb.)
- HD Trailer 2x Jacks (25k lb.) No Frt T/box GN Only

* denotes a standard feature



8" Channel Carhauler (C8)



Lengths
20' - 40'

Standard Features

- Front Toolbox (GN Only)
- 14,000 lb. G.V.W.R.
- 7,000 lb. x 2 G.A.W.R.
- 2 5/16" Ball A-Frame Coupler
- Safety Chains
- 1 - Drop Leg Jack (10,000 lb.)
- 2 - Posi-lube Brake Axles (7,000 lb.)
- 6 Leaf Slipper Spring Suspension
- 4 - 16" White Spoke Wheels
- 4 - 235/80R16 Radial Tires (3,520 lb.)
- Stake Pockets
- Electric Breakaway Kit w/ Charger
- 9" x 72" Treadplate Removable Steel Fenders
- 5' Channel Ramps w/ Holder
- Rear Trailer Support Stands
- 8" Channel Frame & Tongue
- 3" Channel Crossmembers 16" on Center
- 2" Treated Pine Lumber Deck
- 83" Wide Deck (80" w/ Torsion Axles)
- DOT Approved Flushmount Lifetime LED Lights
- Sealed Wire Harness
- Sand Blasted, Acid Washed, Powder Coated



At PJ Trailers, every trailer we build is powder coated with Sherwin-Williams™ Powder Coat. A powder coat finish is far superior to conventional paint. It is extremely durable and does not easily crack, chip, or peel as conventional paint does. Powdercoating also helps prevent rust & corrosion making it the longest lasting and most durable finish on the market.

Coupler Options

- BP 2 5/16" Adjustable (14,000 lb.) *
- Rigid mount 2-5/16 (25,000 lb.)
- GN 2 5/16" Round (30,000 lb.)
- GN Load-Leveling 2 5/16" Square (30,000 lb.)
- 3" Pintle Eye - Channel-mount (21,000 lb.)
- GN 2 5/16" Square (30,000 lb.)
- GN 2 5/16" Round (25,000 lb.)
- GN 2 5/16" Square (25,000 lb.)

Axle Options

- (2) 7,000# Elec / Drop
 - (2) 7,000# Elec / Spring *
 - (2) 7,000# Elec / Torsion**
 - (2) 7,000# Elec/Hyd Disk / Spring
 - (3) 7,000# Elec / Spring
 - (3) 7,000# Elec / Torsion**
 - (3) 7,000# Elec/Hyd Disk / Spring
 - (2) 7,000# 14Ply Tires Elec / Spring
 - (2) 7,000# 14Ply Tires Elec / Torsion**
 - (2) 7,000# 14Ply Tires Elec/Hyd Disk / Spring
 - (3) 7,000# 14Ply Tires Elec / Spring
 - (3) 7,000# 14Ply Tires Elec / Torsion**
 - (3) 7,000# 14Ply Tires Elec/Hyd Disk / Spring
 - (2) 8,000# 14Ply Tires Elec / Spring**
 - (3) 8,000# 14Ply Tires Elec / Spring**
- ** (note only 80" between fenders on CH)

Tail Options

- Straight deck w/ 5' Slide-in Ramps *
- 2' Dovetail w/ 5' Slide-in Ramps
- 2' Dovetail w/ 5' Fold-up Ramps
- Straight deck w/ 5' Fold-up Ramp

Color Options

- Black Powdercoat *
- Equipment Yellow Powdercoat
- Grey Powdercoat
- Red Powdercoat
- White Powdercoat

Other Options

- 2nd Jack (Bumper Pull)
- Plate for Winch
- 6" Taller GN Riser
- 9,990 G.V.W.R.
- Rubrail
- 12"oc Crossmembers
- 1 Pair D-Rings
- Oak Floor
- Drive Over Fenders
- Hydraulic Jacks (12,000 lb.)
- Receiver Hitch
- LED Light Package
- 2 3/8" Removable Pipetop on Siderails
- Diamond Plate Running Boards
- Steel Floor & 4 D-Rings
- 102" Deck Width
- Mount Only for Spare Tire
- Spare Tire and Mount (Bumper Pull)
- Deck on the Neck (GN Only)
- Winch 12VDC (12,000 lb.)
- 2-speed Jacks (12,000 lb.)
- 2-speed Jacks, (12,000 lb.) No Front Toolbox

* denotes a standard feature



Light Duty Deckover 5" Channel (L5)



Lengths
16' - 20'

Coupler Options

BP 2 5/16" Adjustable (14,000 lb.) *
3" Pintle Eye - Channel-mount (21,000 lb)

Axle Options

(2) 3,500# Electric / Spring *

Tail Options

Straight Deck w/ 6'6" Slide-in Ramps *

Color Options

Black Powdercoat *
Equipment Yellow Powdercoat
Grey Powdercoat
Red Powdercoat
White Powdercoat

Other Options

1 Pair D-Rings
Spare Tire and Mount (Bumper Pull)
V Shape Front Deck

* denotes a standard feature

Standard Features

- 7,000 lb. G.V.W.R.
- 3,500 lb. x 2 G.A.W.R.
- 2 5/16" Adjustable Ball Coupler
- Safety Chains
- 1 - Drop Leg Jack (7,000 lb.)
- 2 - Posi-lube Brake Axles (3,500 lb.)
- 6 Leaf Slipper Spring Suspension
- 4 - 15" White Spoke Wheels
- 4 - 205/75R15 Radial Tires (1,800 lb.)
- Rubrail & Stake Pockets
- Electric Breakaway Kit w/ Charger
- DOT Reflective Tape
- 6' Slide in Ramps w/ Holders
- 5" Channel Tongue
- 5" Channel Frame Main Frame
- 3x2" Angle Channel Crossmembers 16" on Center • 2" Treated Pine Lumber Deck
- 96" Wide Deck
- DOT Approved Flushmount Lifetime LED Lights
- Sealed Wire Harness
- Sand Blasted, Acid Washed, Powder Coated



Medium Duty Deckover 6" Channel (L6)



Lengths
16' - 20'

Coupler Options

BP 2 5/16" Adjustable (14,000 lb.) *
3" Pintle Eye - Channel-mount (21,000 lb)

Axle Options

(2) 5,200# Electric / Spring *

Tail Options

Straight Deck w/ 6'6" Slide-in Ramps *

Color Options

Black Powdercoat *
Equipment Yellow Powdercoat
Grey Powdercoat
Red Powdercoat
White Powdercoat

Other Options

1 Pair D-Rings
Spare Tire and Mount (Bumper Pull)
V Shape Front Deck

* denotes a standard feature

Standard Features

- 9,990 lb. G.V.W.R.
- 5,200 lb. x 2 G.A.W.R.
- 2 5/16" Adjustable Ball Coupler
- Safety Chains
- 1 - Drop Leg Jack (7,000 lb.)
- 2 - Posi-lube Brake Axles (5,200 lb.)
- 6 Leaf Slipper Spring Suspension
- 4 - 15" White Spoke Wheels
- 4 - 225/75R15 Radial Tires
- Rubrail & Stake Pockets
- Electric Breakaway Kit w/ Charger
- DOT Reflective Tape
- 6' Slide in Ramps w/ Holders
- 6" Channel Tongue
- 6" Channel Frame Main Frame
- 3x2" Angle Channel Crossmembers 16" on Center
- 2" Treated Pine Lumber Deck
- 96" Wide Deck
- DOT Approved Flushmount Lifetime LED Lights
- Sealed Wire Harness
- Sand Blasted, Acid Washed, Powder Coated



Carhaulers & Equipment Options Guide (some options not shown, please view the product page for a list of all options)

Coupler Options



Bumper Pull



3" Pintle Eye



8" I-Beam Gooseneck (CC)



12" I-Beam Gooseneck (C8)
24+ ft only

Color Options



Black Powder Coat



Eq. Yellow Powder Coat



Grey Powder Coat



White Powder Coat



Red Powder Coat

(actual color may vary)

Tail Options



Straight deck w/ 5' Slide-in Ramps



2' Dovetail w/ 5' Slide-in Ramps



Straight deck w/ 5' Fold-up Ramps



2' Dovetail w/ 5' Fold-up Ramps

Other Options



Receiver Hitch



Rubrail



Winch 12VDC (12,000 lb.)



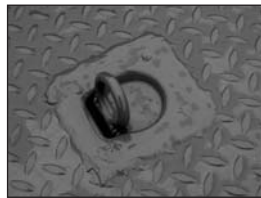
Deck on the Neck (GN Only)



1 Pair D-Rings



Rough Oak Floor



Steel Floor & 4 D-Rings



Drive Over Fenders



Diamond Plate Running Boards



2 3/8" Pipetop Removable Siderails (CC, C8)



Spare Tire Mount



About PJ Trailers

Established in 1991, PJ Trailers has become the premier open trailer manufacturer in North America. The PJ Trailer brand is synonymous with high-end, superbly constructed trailers. We feature standard powder coating on every trailer we build.

Visit Us Online at www.pjtrailers.com